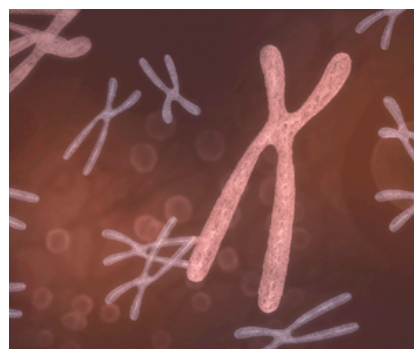


Survive & Thrive: *sustaining creative projects, organisations & businesses in challenging economic times*

**Telstra Clear Pacific Arena Theatre | Monday 9
November 2009 | 11.00 am – 4.00 pm**



The Forum & Expo is a significant creative sector networking event for entrepreneurial artists, producers & organisations working in the Auckland region.

The Expo will provide promotion and networking opportunities for all participants; it features organisations that are the motivators and backbone of Auckland's creative sector infrastructure. The two-hour Forum commencing at 1pm is set to be inspiring, insightful and information packed – a mix of presentations, sharing experiences and working opportunities.

Programme

11.00am: Expo opens

12.15pm: Networking over finger-food lunch

1.00pm: Survive & Thrive Forum . . . Welcome & Introduction | MC Moana Maniapoto

1.10pm: Table-talk networking . . .

1.20pm: My journey as a creative entrepreneur | Introducing Rhonda Kite

1.50pm: Surviving challenging economic times | Sharing your experiences, tips & tools

2.05pm: Promoting creative work, generating cash, growing business

What & where are the opportunities over the next few years? How can you make them work for you?

An action-packed hour featuring presentations, case-studies, tips & tools . . .

3.20pm: Action-planning: Where to from here for YOU?

3.30pm: Last words . . .

Expo continues | cash-bar open

4.00pm: Finish

Survive and Thrive; *sustaining creative projects, organisations & businesses in challenging economic times.*

A unique regional creative sector forum and expo event.

Delivered by: Arts Regional Trust: Te Taumata Toi a Iwi (ART) | The Big Idea - Te Aria Nui

Sponsored by: ASB Community Trust | Enterprising Manukau | Manukau City Events